

Name		Roll Number	
------	--	-------------	--



**INDIAN SCHOOL MUSCAT
MIDDLE SECTION
FINAL EXAMINATION 2017-18**



SCIENCE

Code: MZSC03/08

CLASS: VIII

Time Allotted: 2 ½ Hrs.

11.03.2018

Max .Marks: 80

General Instructions:

1. The question paper comprises of **two Sections, A and B**. You have to attempt both the sections.
2. **All** questions are **compulsory**.
3. **All answers should be written in the answer sheet provided.**

SECTION A

1.Fill in the blanks

- a. Force exerted by a charged body on another charged or uncharged body is called _____. 1
- b. Small bodies in the cytoplasm of leaf cells that give different colours to the leaf are called _____. 1
- c. Lowest temperature at which a substance catches fire is called as _____. 1
- d. Vibrating part in a flute while music is played is _____. 1
- e. The first menstrual flow at puberty is termed as _____. 1
- f. When the fusion of male and female gamete takes place outside the body of the female, it is called _____ fertilization 1

2. Choose the correct answer

- a. When two forces applied on an object are equal and opposite, then 1
 - i) object moves in the direction of smaller force
 - ii) Object moves in the direction of larger force
 - iii) object does not move
 - iv) None of the above
- b. Which of these substances are inflammable? 1
 - i) coal
 - ii) petrol
 - iii) wood
 - iv) all of the above
- c. The part of the eye that controls the amount of light entering the eye is 1
 - i) iris
 - ii) lens
 - iii) eyelids
 - iv) cornea
- d. When a foreign body or germ enters our body, what does our body produce to fight it? 1
 - i) antigen
 - ii) antibody
 - iii) antibiotic
 - iv) pathogen
- e. Most liquids that conduct electricity are solutions of 1
 - i). acids
 - ii). salts
 - iii). bases
 - iv). all of the these
- f. The stage at which zygote divides and develops but tissues and organs of the body still not clearly identifiable is known as 1
 - i) infant
 - ii) zygote
 - iii) foetus
 - iv) embryo

3. State TRUE or FALSE

- a. Forces applied on an object in the same direction add to one another. 1
- b. Petrol is much cleaner fuel compared to CNG, as it causes less pollution. 1
- c. Sodium is stored in water. 1
- d. Sound can travel through vacuum. 1
- e. Adolescence is period of change in ones blood type. 1
- f. Reproduction that involves only a single parent is called asexual reproduction. 1

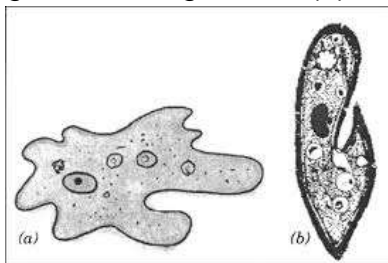
4. Give ONE word / term for the following

- a. The Magnetic Force exerted by a magnet on a magnetic material is a type of _____ force. 1
- b. Chemical process in which a substance reacts with oxygen to give off heat is _____. 1
- c. The most popular resource for visually challenged persons is _____. 1
- d. The to and fro motion of an object is termed as _____. 1
- e. Cans used for storing food are electroplated with this metal less reactive than iron _____. 1
- f. Endocrine gland called the master gland in the human body is _____. 1
- g. The result of fertilization is the formation of a _____. 1

SECTION B

Questions 5 to 19 carry 1 mark each

- 5. What will be the direction of the force of friction acting on a moving body? 1
- 6. Identify the following single-celled organisms (a) and (b) shown below: 1

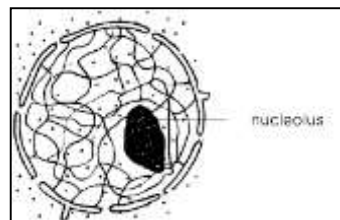


- 7. Give an example each for a contact and non-contact force. 1
- 8. Which property of aluminium is used to make aluminium foil? 1
- 9. Why is it dangerous to burn coal in a closed room? 1
- 10. The voices of women are different from that of men. Why? 1
- 11. Name the smallest and largest cell. 1
- 12. What is the unit of calorific value of a fuel? 1
- 13. How are viruses different from other microorganisms? 1
- 14. Whistles used for police dogs are not heard by us. Give reason. 1
- 15. When the free ends of a tester are dipped into a solution, the magnetic needle shows a deflection. Why? 1
- 16. Consider 3 charged bodies **A**, **B** and **C**. If **A** and **B** repel each other and **A** and **C** attract each other, what would be the nature of charge on **B** and **C** if **A** is positively charged? 1
- 17. Write two characteristics of an image formed by a plane mirror. 1
- 18. Give the function of the eardrum? 1
- 19. What is binary fission? 1

Questions 20 to 29 carry 2 marks each

20. What is a lightning conductor? What is the principle behind it? 2
21. An element **P** when burnt in air produces an oxide which when dissolved in water, gives a solution that turns blue litmus red. Is **P** a metal or a non-metal? What is the nature of the oxide formed? Write a word equation to show the reaction of sodium oxide with water. 2

- 22 a) Identify the structure shown in the figure. 2
- b) Where is this found?
- c) What are the thread like structures found inside called and state their function?

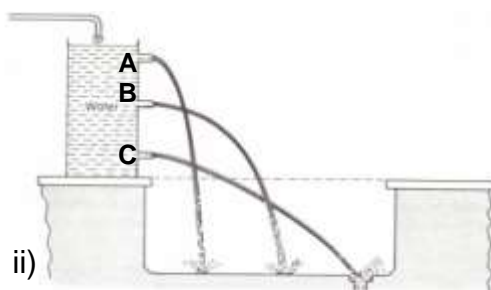


23. Give reason: 2
- a) When the clothes of a person catch fire, the person is covered with a blanket to extinguish fire.
- b) A matchstick does not catch fire on its own at room temperature.
24. Write two safety measures you would take during thunderstorm when you are inside your house. 2
- 25 a) Name the gases evolved at the positive and negative electrode during electrolysis of Tap water. 2
- b) What are the electrodes made of?
- c) Why is distilled water not used as an electrolyte?

26. Observe the pictures given below and give reason for the following: 2

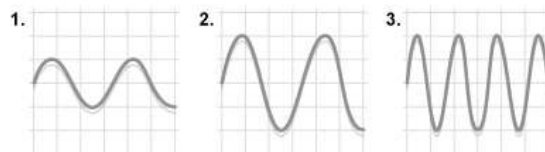


i)



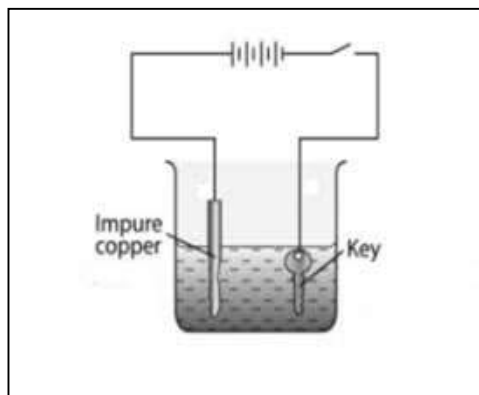
ii)

- a) It would be impossible for us to pull out a sucker (**fig i**) from a plane surface if there were no air between it and the surface.
- b) The water rushing out from the hole **C** in **fig ii**) reaches the farthest distance.
27. Give reason 2
- a) The sex of the baby is determined by the father.
- b) Many young people get acne or pimple on their face during puberty.
28. Write two ways by which atmospheric nitrogen is fixed in the soil. 2
- 29 a) Which of the sound waves shown in the figure has the highest frequency? 2
- b) What is the relation between pitch and frequency?



Questions 30 to 34 carry 3 marks each

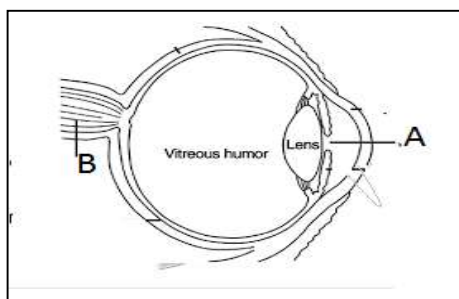
- 30 a) What is the difference between pathogens and carriers? 3
b) What are communicable diseases?
c) While returning from school Teena ate chaat from a street hawker. On reaching home she started vomiting and had to be taken to the hospital. What could be the reason?
31. Draw a plant cell and label the cell wall, vacuole, chloroplast and nucleus. 3
32. Look at the diagram given below and answer the following: 3



- a) Identify the electrode to which the object to be electroplated (key) is attached.
b) What will be the electrolyte used in this process.
c) Define the above process.
d) Give one application of this process.
33. What would you observe when a strip of magnesium and a strip of silver are dipped in copper sulphate solution. Explain with necessary word equation. 3
- 34 a) What is an electroscope? 3
b) What will be the charge acquired on the leaves, when you touch the knob of an electroscope with a charged glass rod?
c) Why do the diverged leaves of the electroscope collapse when we touch the metal knob with our hands?

Questions 35 carries 5 marks

35. 5



- a) Identify the parts marked **A** and **B** in the diagram shown above.
b) Write the function of the lens in human eye.
c) What is blind spot?
d) Name the condition in old age when the eye sight becomes foggy? What is the reason for this?
